

**rodeca**  
Translucent Building Elements

→ **In Detail.**  
Discover our new product line!



[www.rodeca.de/en](http://www.rodeca.de/en)

Rodeca GmbH  
Freiherr-vom-Stein-Str. 165  
DE - 45473 Mülheim an der Ruhr

Tel.: +49 (0)208 / 76502-0  
Fax: +49 (0)208 / 76502-11  
E-Mail: [info@rodeca.de](mailto:info@rodeca.de)

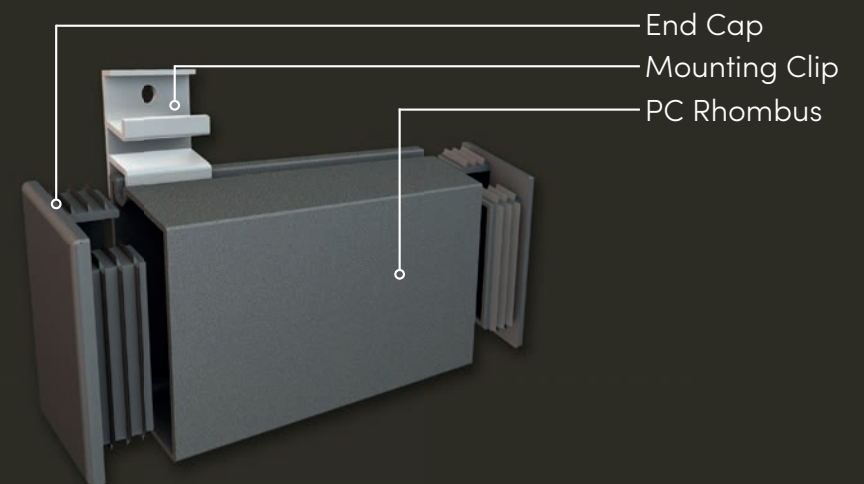
# PC RHOMBUS



## SIMPLE & WELL-DESIGNED

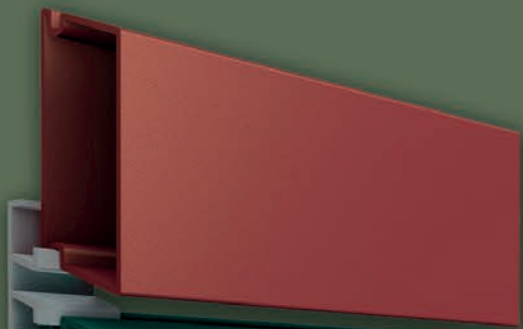
Rodeca rhombus slats made of polycarbonate are unique. They stand out for their weather resistance, low maintenance requirements, and easy, quick installation thanks to concealed mounting clips. Unlike wood, they do not require protective coatings, are lightweight, and therefore extremely versatile. Rodeca rhombus slats are available in two different versions:

Our Rhombus Eco-Line is made of recycled, opaque polycarbonate and comes in three standard colors with a matte finish. The Rhombus Premium-Line is made of virgin polycarbonate and can be delivered in opaque or translucent colors upon request.



# RHOMBUS ECO-Line

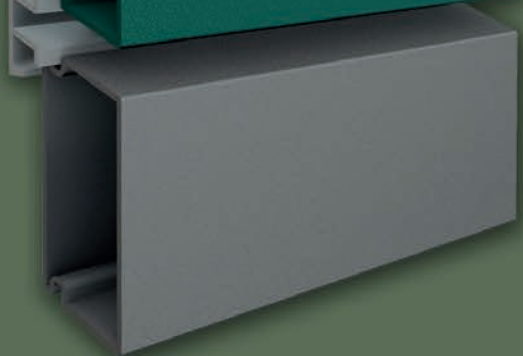
The Rhombus Eco-Line is made from eco-friendly, recycled PCR material, offering a sustainable alternative for modern construction projects. It is available in three attractive colors with a frosted finish and stands out for its durability and weather resistance. This series combines ecological responsibility with high-quality functionality and versatile design.



Swedish Red



Moss Green



Anthracite

Standard Colors Eco-Line





# RHOMBUS PREMIUM-Line

The Rhombus Premium-Line is made from polycarbonate (virgin material) and can be produced in almost any desired color, available in both opaque and translucent versions. This series offers maximum design flexibility and meets the highest aesthetic standards for modern construction projects.



Color Examples Premium-Line