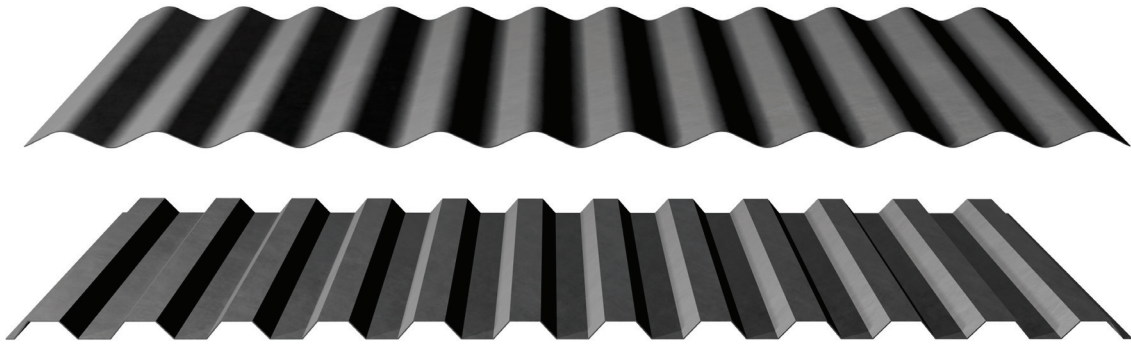


PC 76/18 Sinus | PC 76/18 Trapeze

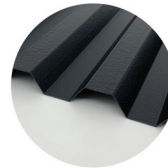


## Product properties

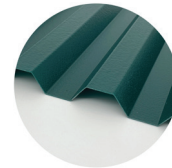
Profile	Raw material	Standard Building width / effective width	Standard-thickness	other Building widths / effective widths*	other thicknesses*	UV-protection	fire classification EN 13501
76/18 Sinus	Polycarbonate 100% recycled (post consumer material)	1116 / 1064 mm	0,9 mm	900 / 836 mm 1040 / 988 mm 1265 / 1216 mm	0,90 -1,4 mm	one-sided / both-sided	E
76/18 Trapeze							

(\*on request)

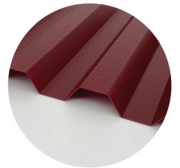
Colours
*Colour tones may vary slightly between different batches of material due to the process



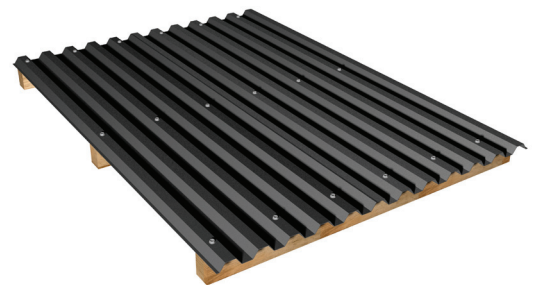
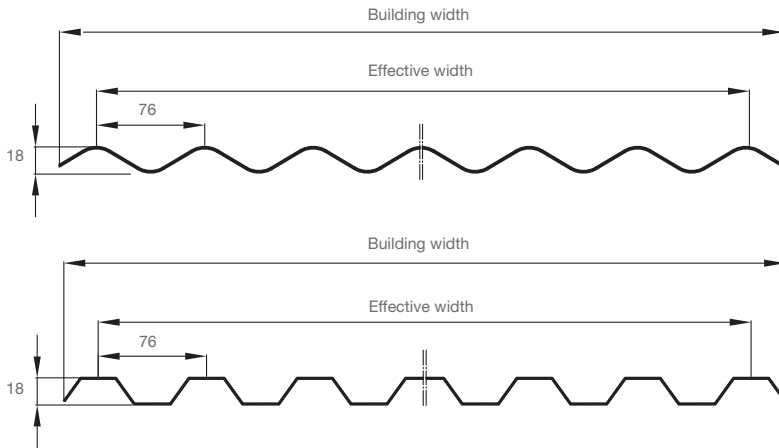
black\*



moss green\*



brick red\*



Delivery length up to 7 m

## Static recommendations

### 76/18 Sinus

Thickness mm	Distance A				Distance B			
	0,6 kN/m <sup>2</sup>	0,9 kN/m <sup>2</sup>	1,2 kN/m <sup>2</sup>	1,5 kN/m <sup>2</sup>	0,6 kN/m <sup>2</sup>	0,9 kN/m <sup>2</sup>	1,2 kN/m <sup>2</sup>	1,5 kN/m <sup>2</sup>
0,9-1,0	1,05 m	0,95 m	0,90 m	0,85 m	0,85 m	0,75 m	0,70 m	0,65 m
1,1-1,4	1,10 m	1,00 m	0,95 m	0,90 m	0,90 m	0,80 m	0,75 m	0,70 m



### 76/18 Trapeze

Thickness mm	Distance A				Distance B			
	0,6 kN/m <sup>2</sup>	0,9 kN/m <sup>2</sup>	1,2 kN/m <sup>2</sup>	1,5 kN/m <sup>2</sup>	0,6 kN/m <sup>2</sup>	0,9 kN/m <sup>2</sup>	1,2 kN/m <sup>2</sup>	1,5 kN/m <sup>2</sup>
0,9-1,0	1,10 m	1,00 m	0,95 m	0,90 m	0,90 m	0,85 m	0,80 m	0,75 m
1,1-1,4	1,15 m	1,05 m	1,00 m	0,95 m	0,95 m	0,85 m	0,80 m	0,75 m

The spans shown in the table are recommended, non-binding guide values. These statements do not replace any required country-specific or building code documents.